



D4mm 520nm Standard Green Dot Laser Module

Application

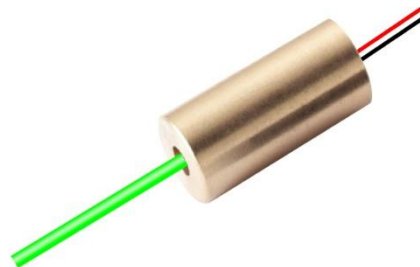
Portable Applications / Laser Sight / Industry / Biomedical

Property

Wavelength Range = 520nm

Introduction

The standard small laser module with its compact size of D4mm x 8.5mm, allows developers easily integrated at various portable devices and also for all products with limited space. 520nm laser brightness is well recognized and adopted at many application field.



Specifications(T=25°C)

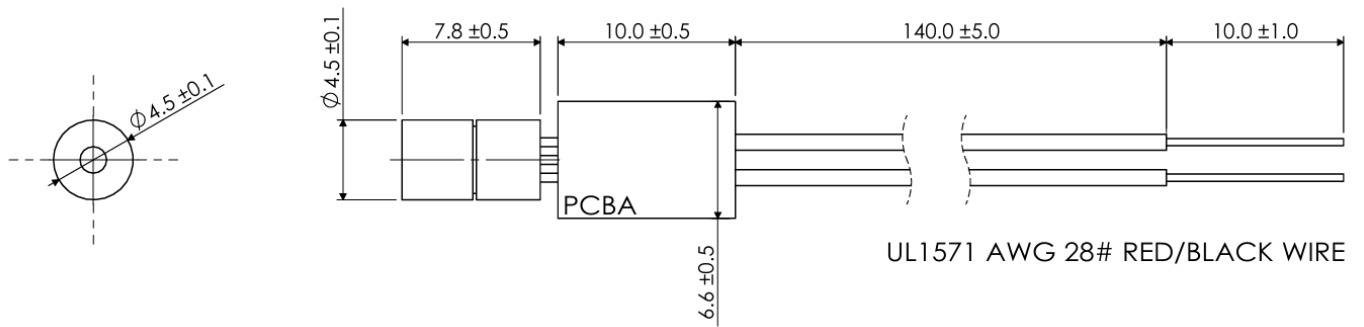
Items	Symbols	LM4G520H1R	LM4G520H5R
Mode		CW	
Wavelength	λ	520nm	
Lens		GLASS	
Spot	D	Round Dot	
Spot Size	D	<4mm at 1m	
Diameter x Length	$\Phi \times L$	4.5x8mm (Housing size)	
Output Power	Po	0.7mW (typ)	2.5mW (typ)
Power Stability		<10%	
Divergence Angle	mrad	<3	
Operating Voltage(DC)	Vo	3V / 5V	
CW Operating Current	Io	25mA (typ)	50mA (typ)
Operating Temperature	To	-10°C ~ +40°C	
Storage Temperature	Ts	-20°C ~ +80°C	
Housing Material		Brass	
Mean time to failure		>6,000 hrs	



ATTENTION – Observe Precautions For Handling – Electrostatic Sensitive Device

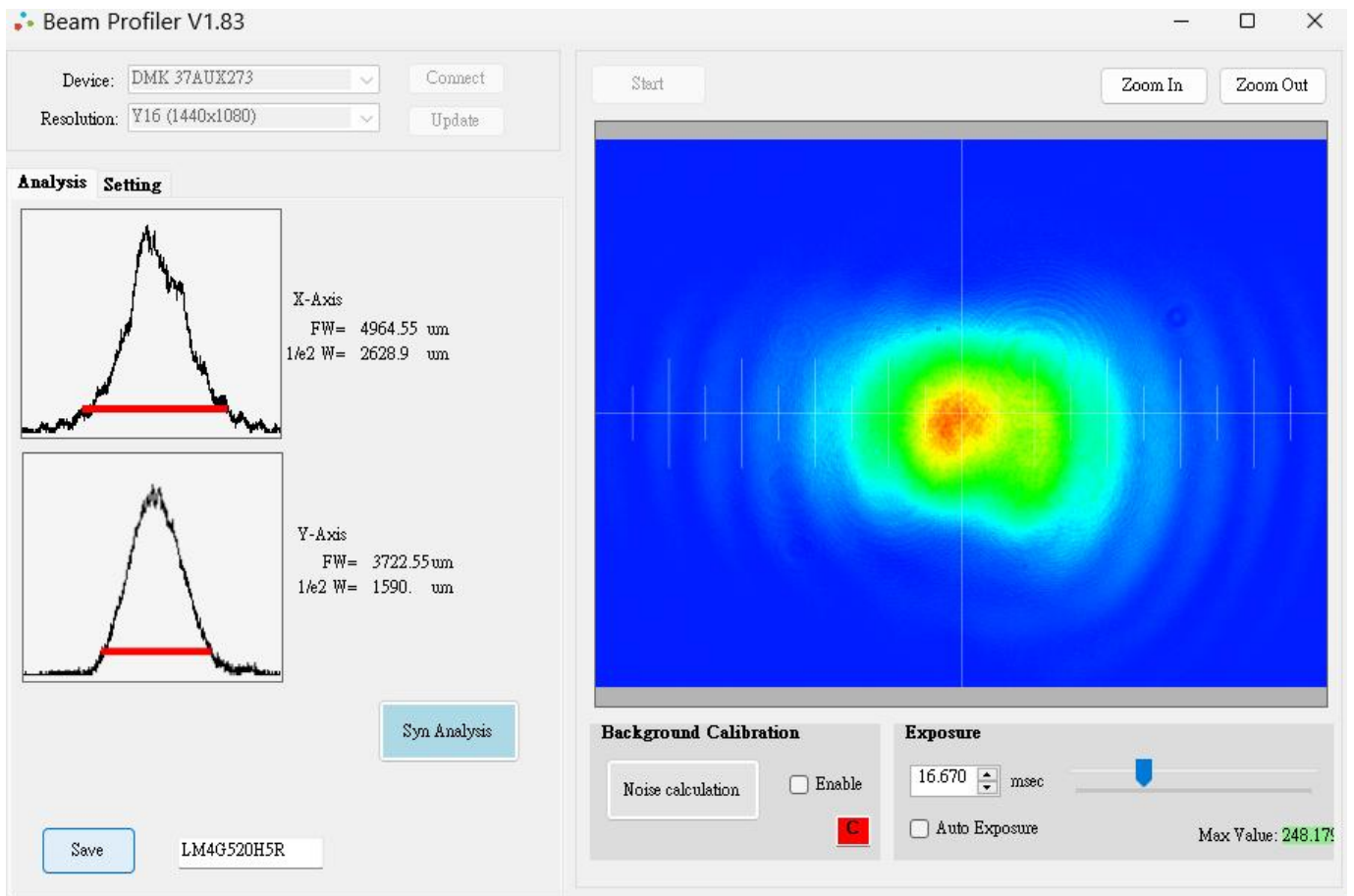


Outline Dimensions

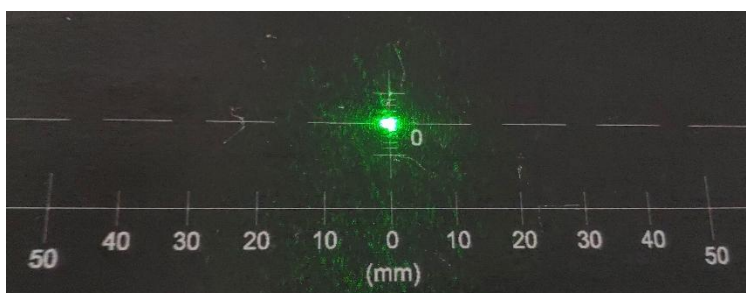


Spot size Define

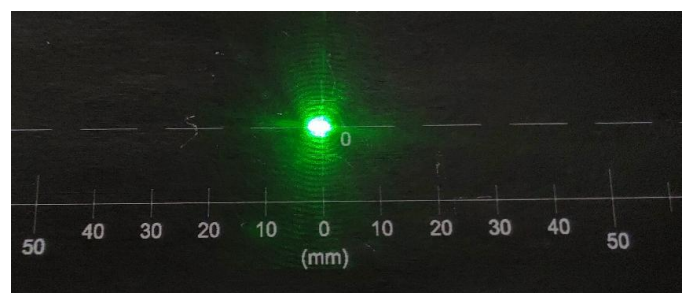
LM4 series Dot Shape at 1m



LM4 series beam shape at 1m



LM4 series beam shape at 3m





Power Stability

The actual output power will be between the range 2mW to 3mW (LM4G520H5R), but once you make sure the value, for example, $2\text{mW} \pm 0.1\text{mW}$ at the 25°C temperature. Then the power stability represents 5%.

Spot size

The spot size defined as Gaussian beam. In optics, a Gaussian beam is a beam of electromagnetic radiation whose transverse electric field and intensity (irradiance) distributions are well approximated by Gaussian functions. Many lasers emit beams that approximate a Gaussian profile, in which case the laser is said to be operating on the fundamental transverse mode, or "TEM00 mode" of the laser's optical resonator. When refracted by a diffraction-limited lens, a Gaussian beam is transformed into another Gaussian beam (characterized by a different set of parameters), which explains why it is a convenient, widespread model in laser optics.

Mean time to failure (MTTF)

Mean time to failure (MTTF) is the length of time a device or other product is expected to last in operation. MTTF is one of many ways to evaluate the reliability of pieces of hardware or other technology. It's important to note, however, that the mean time to failure metrics provided by companies regarding specific products or components may not have been collected by running one unit continuously until failure. Instead, MTTF data is often collected by running many units, even many thousands of units, for a specific number of hours.

Laser Safety

The light emitted from these devices has been set in accordance with IEC60825-1. However, staring into the beam, whether directly or indirectly, must be avoided.

Class 1

The maximum permissible exposure (MPE) cannot be exceeded, it includes High-power lasers within an enclosure that prevents exposure to the radiation and that cannot be opened without shutting down the laser. For example, a continuous laser at 600nm can emit up to 0.39mW, but for shorter wavelengths, the maximum emission is lower.

Class 2

"Caution", visible laser light less than 1.0mW. Considered eye safe, normal exposure to this type of beam will not cause permanent damage to the retina.

Class 3A

"Danger", visible laser light between 1.0mW and 5.0mW. Considered eye safe with caution. Focusing of this light into the eye could cause some damage.

Class 3B

"Danger", infrared (IR), and high power visible lasers considered dangerous to the retina if exposed. NB: it is important to note that while complying with the above classifications, unless otherwise stated. Our laser diode products are not certified and are designed solely for use in OEM products. The way in which device is used in the final product may alter its original design classification, and it is the responsibility of the OEM to ensure compliance with the relevant standards.

Specifications are subject to change without notice.

